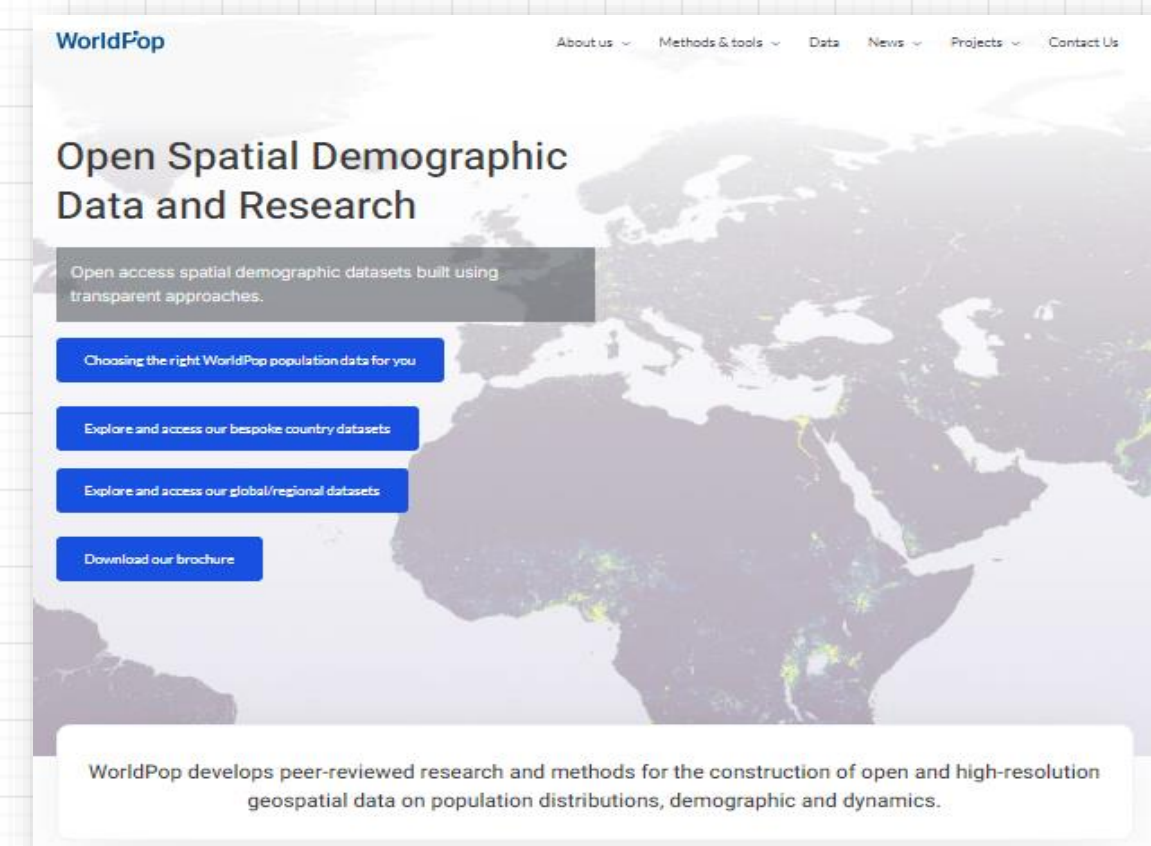
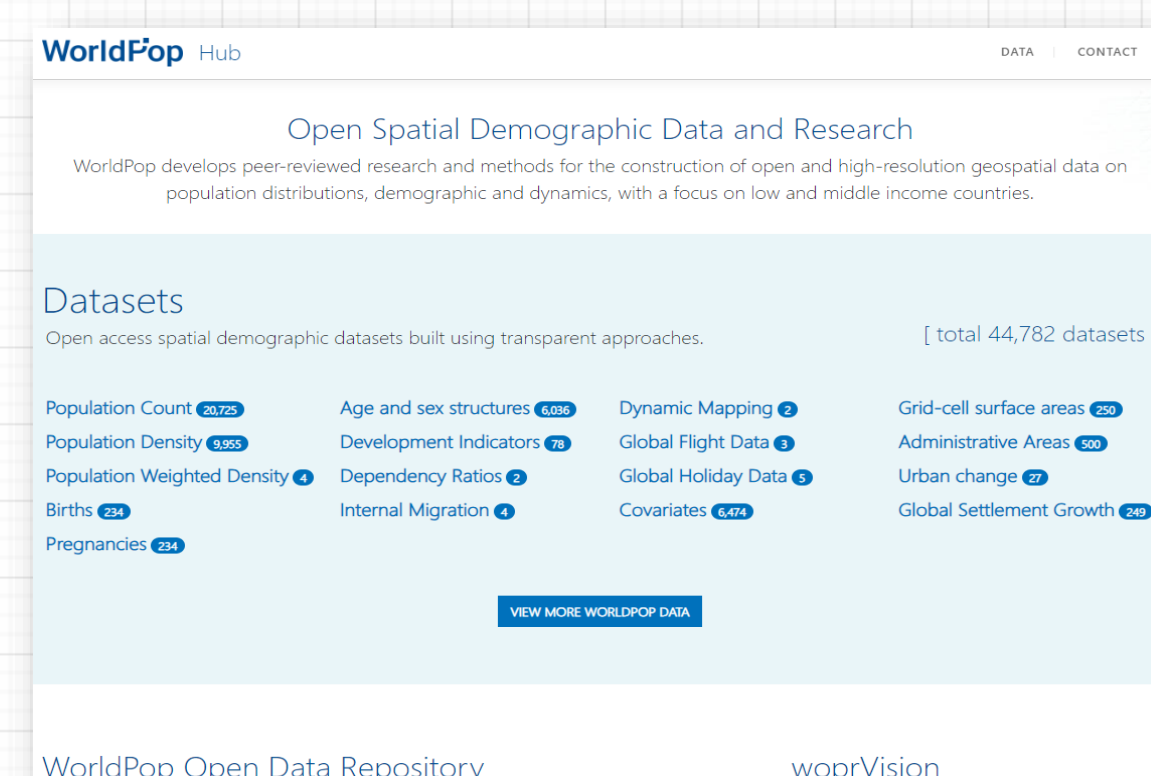


WorldPop Spatial Data Infrastructure

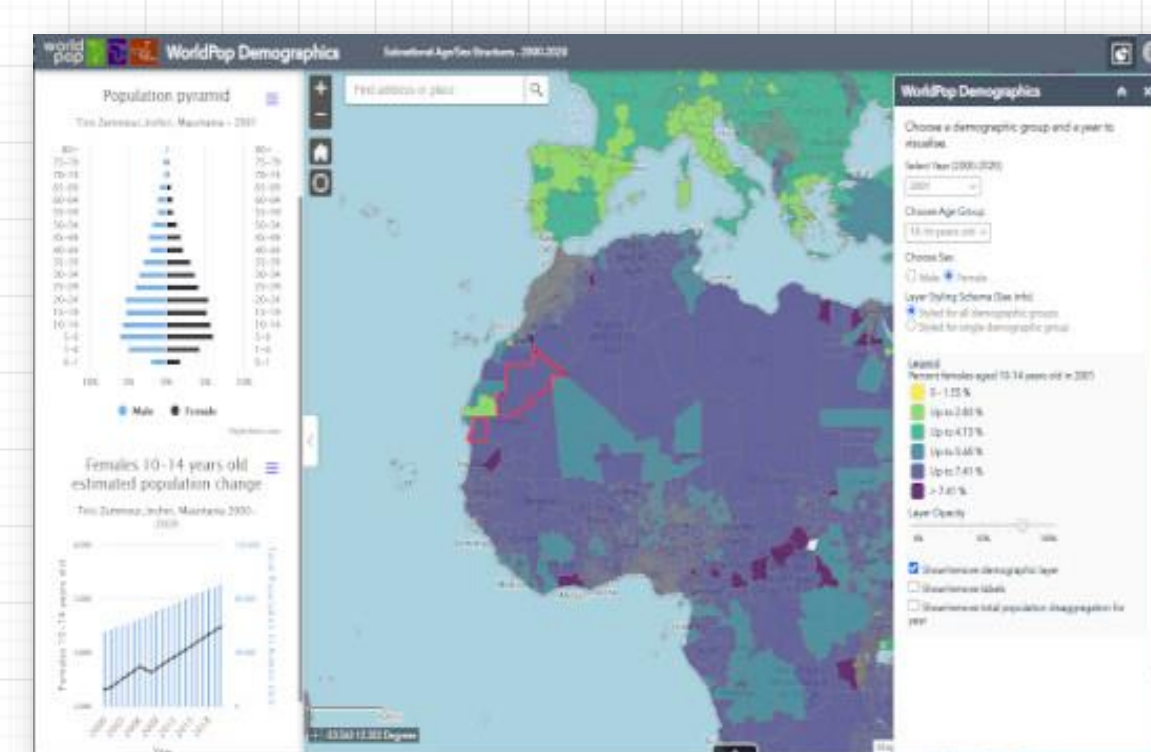
The WorldPop Spatial Data Infrastructure (SDI) team was created in 2018 as a means for WorldPop to facilitate the dissemination of the data produced by the WorldPop. The functionality and capability of the SDI team has since grown, with its overall aims being to assist members of the WorldPop research group in the development of applications and IT, and to help make WorldPop data and tools more accessible to the wider world.



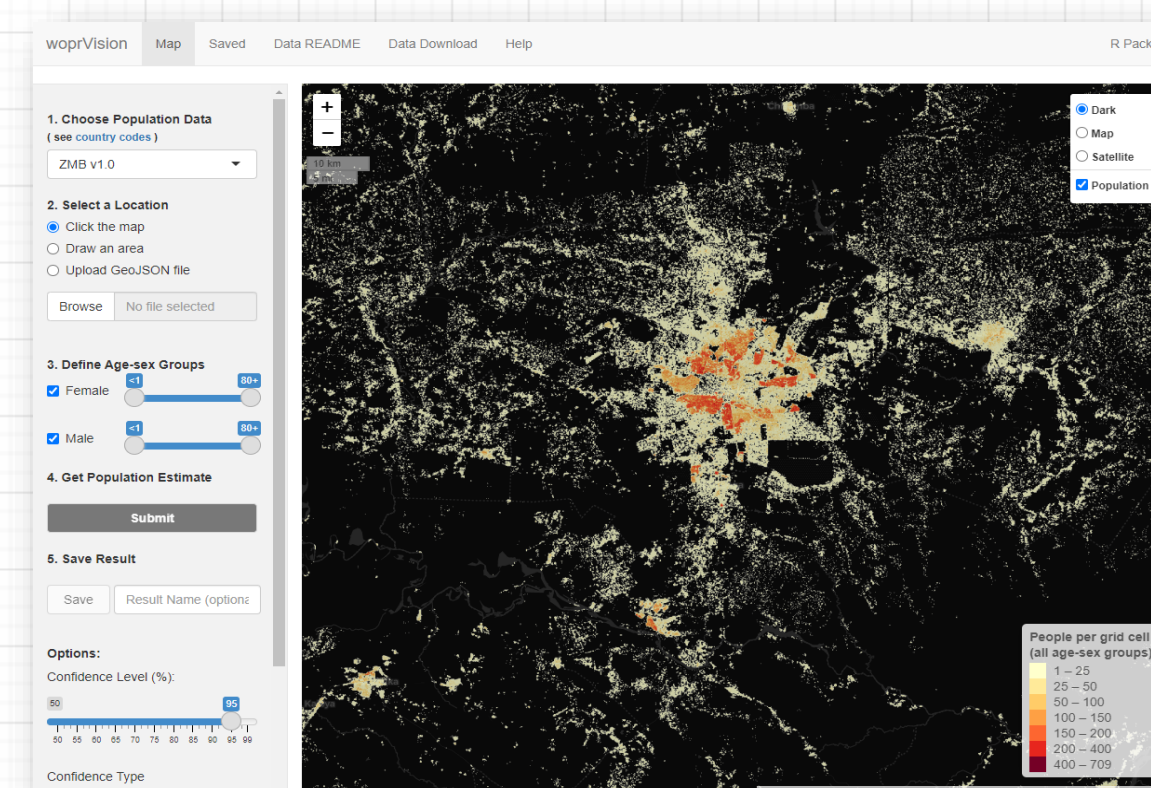
WorldPop website



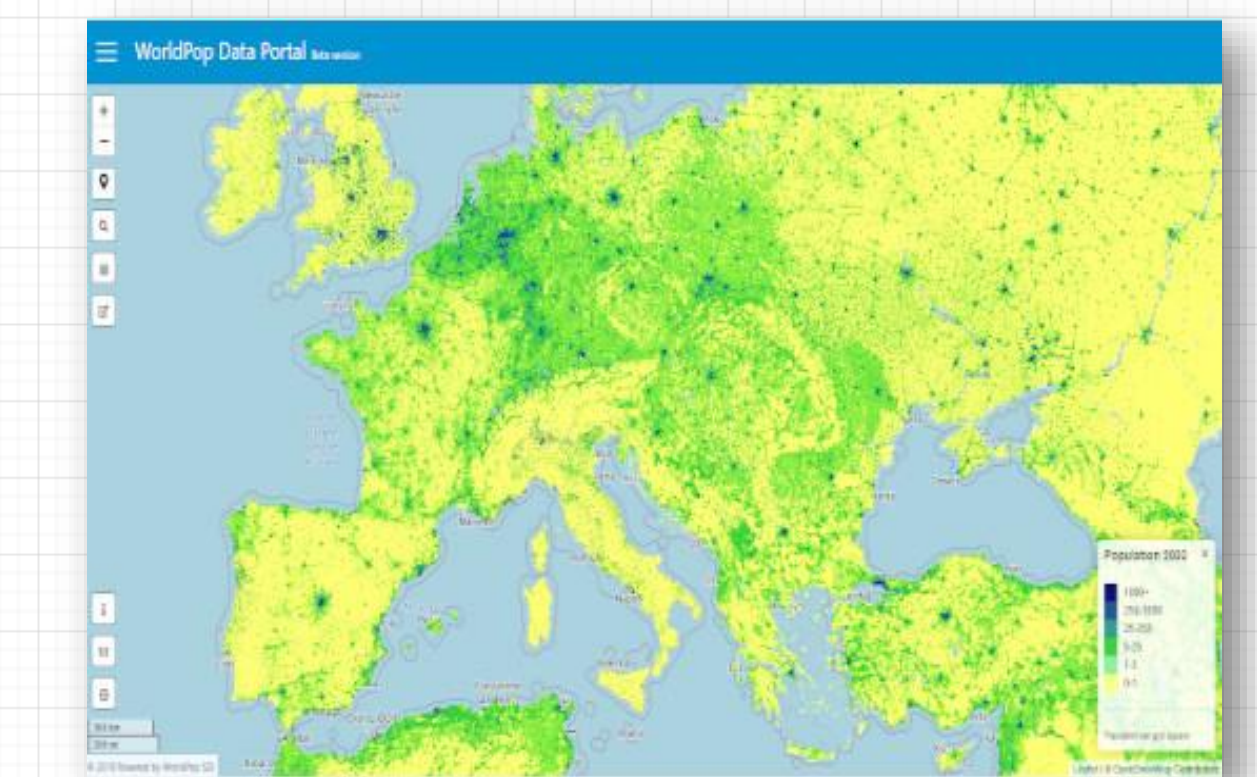
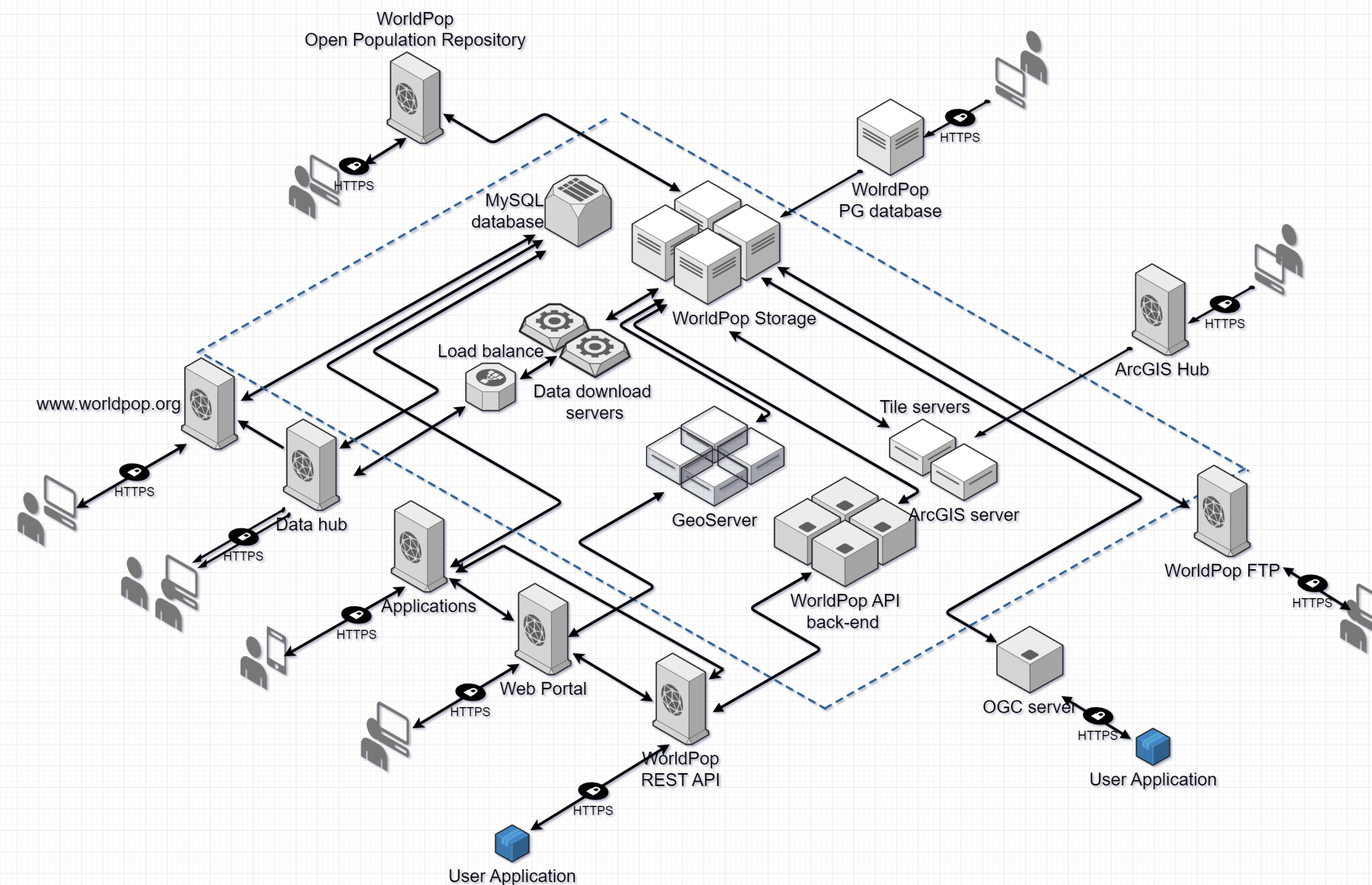
WorldPop DataHub



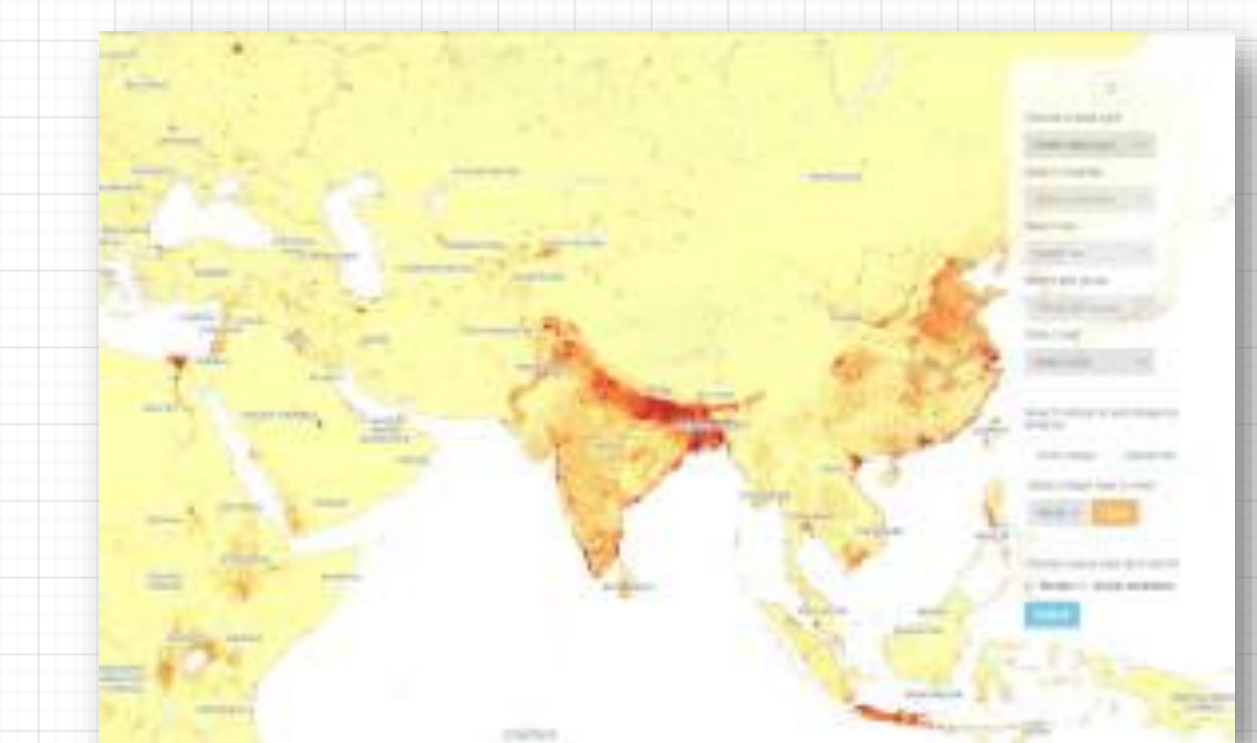
Demographics portal



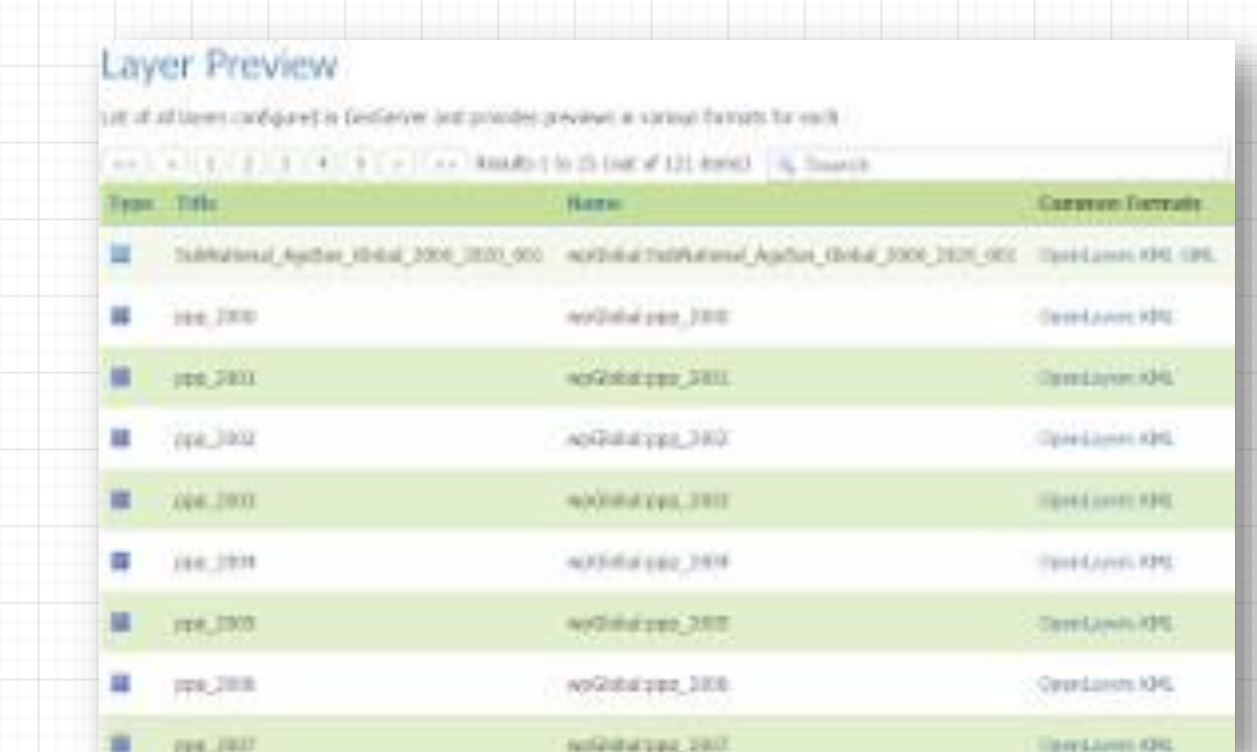
woprVision



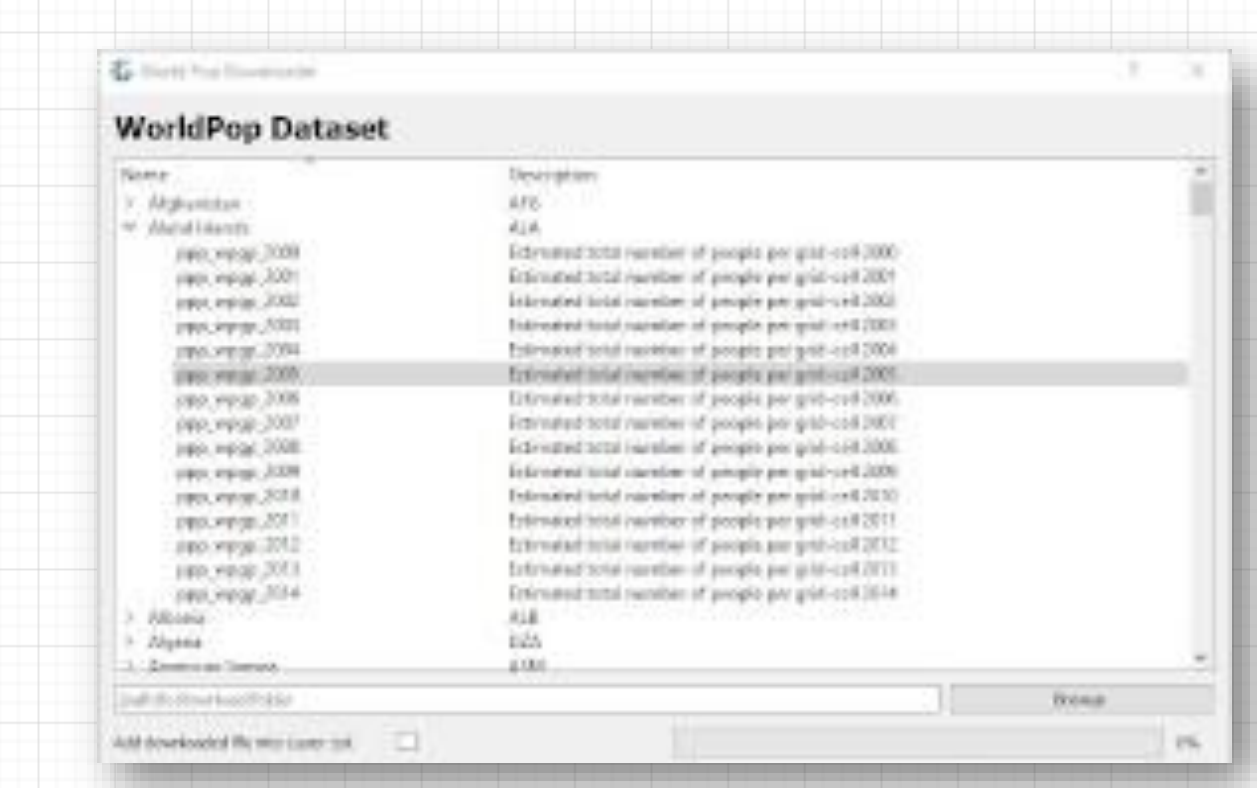
WorldPop Data Portal



WorldPop API



OGC services



GIS Plugins

The WorldPop Spatial Data Infrastructure team develops tools to access outputs generated by the WorldPop research group at the University of Southampton

The WorldPop SDI architecture has been designed to best support the IT infrastructure of WorldPop through a number of access points, allowing different methods of data retrieval.