



WorldPop COVID-19 research and data

Over the last five years, we have conducted a series of influential research projects to support the fight against COVID-19 and its variants of concerns by: i) using nearly real-time global travel data to inform the early spread risk of SARS-CoV-2; ii) quantifying the effects of non-pharmaceutical interventions and vaccination to contain/mitigate the transmission in various demographic and socioeconomic settings across waves, and informing how to adopt coordinated strategies and mobility-based spatial sampling for precise public health responses; and iii) measuring mobility changes and resilience in the context of coupled pandemic and extreme weather events.



www.worldpop.org/covid19

Evaluating the early spread risk of COVID-19 and variants

January 25th, 2020 (Lunar New Year's Day)

Preliminary risk analysis of 2019 novel coronavirus spread within and beyond China

Shengjie Lai^{1*}, Isaac I. Bogoch², Alexander Watts^{3,4}, Kamran Khan^{2,3,4}, Andrew Tatem^{1*}

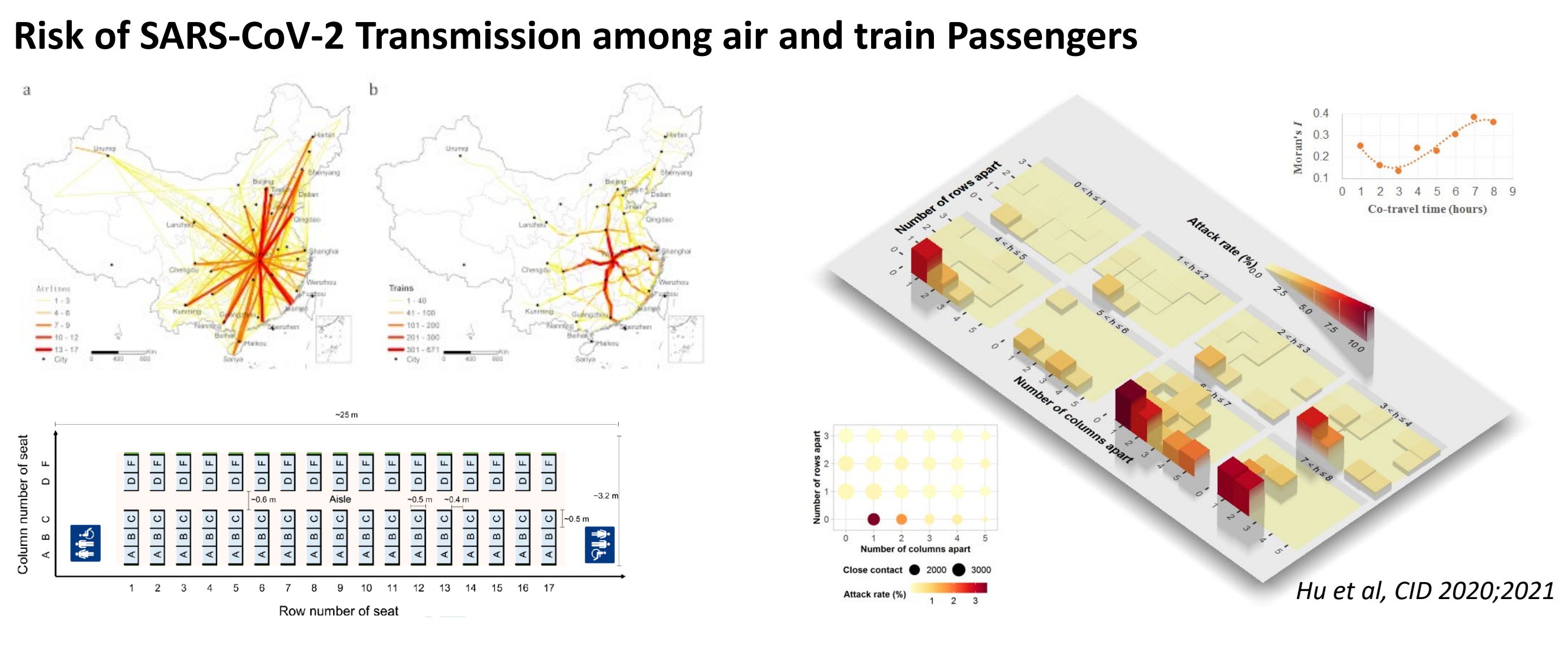
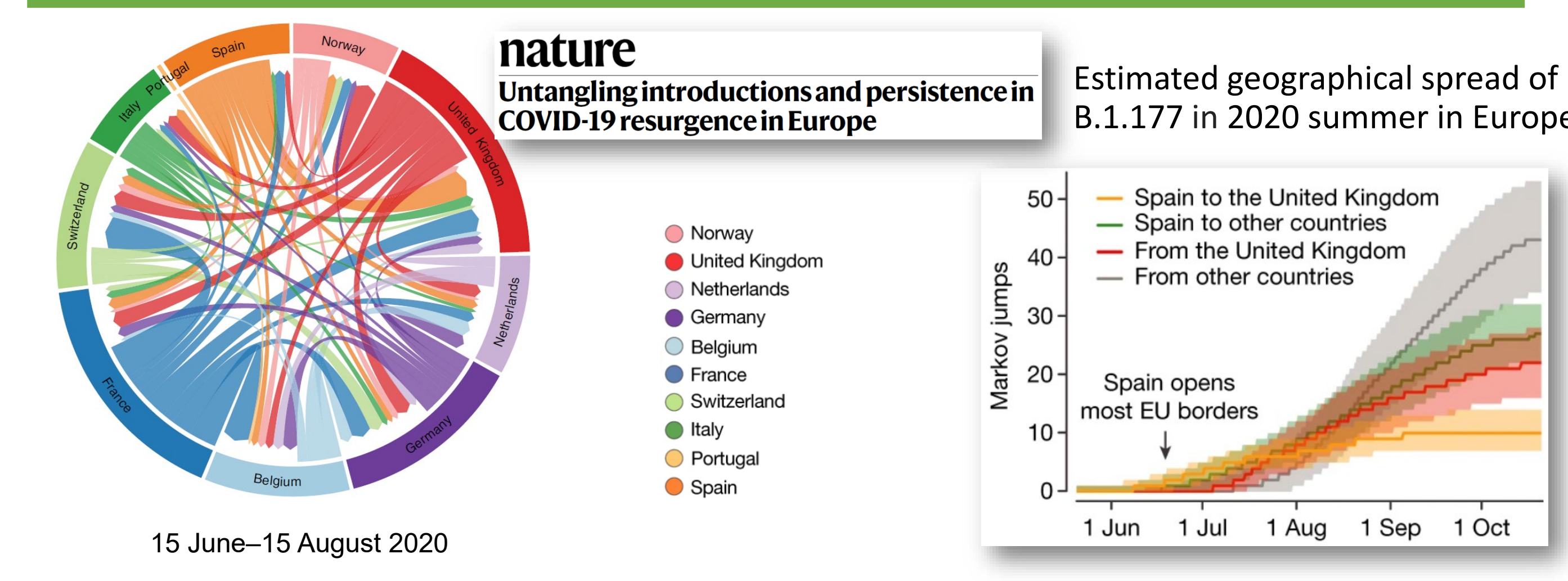
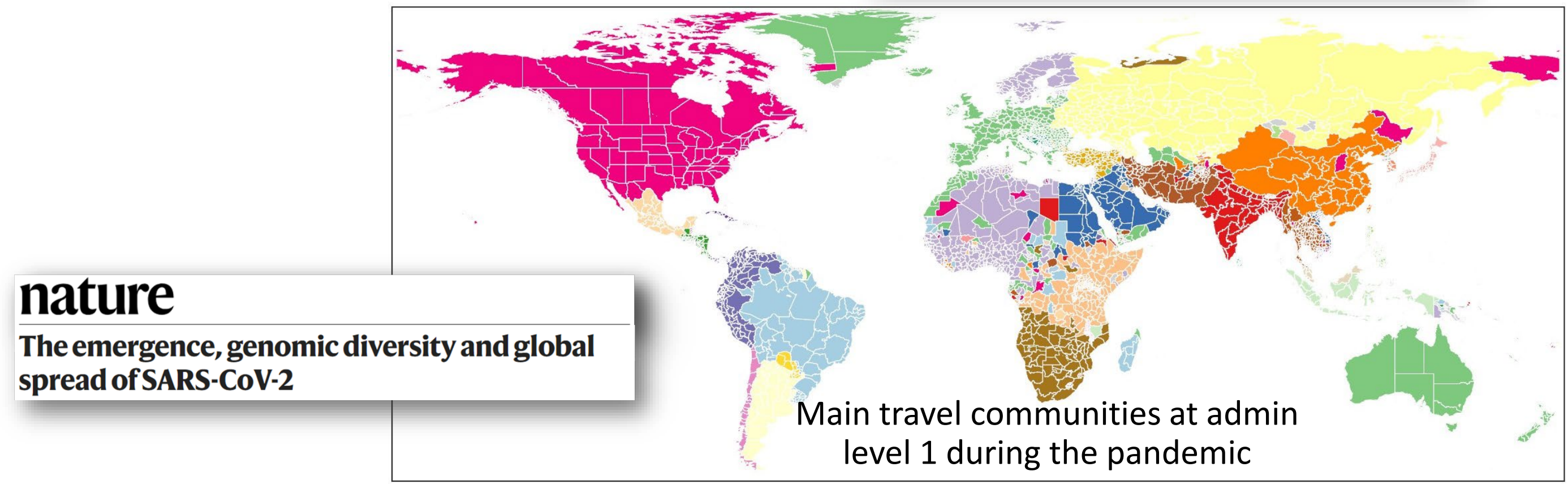
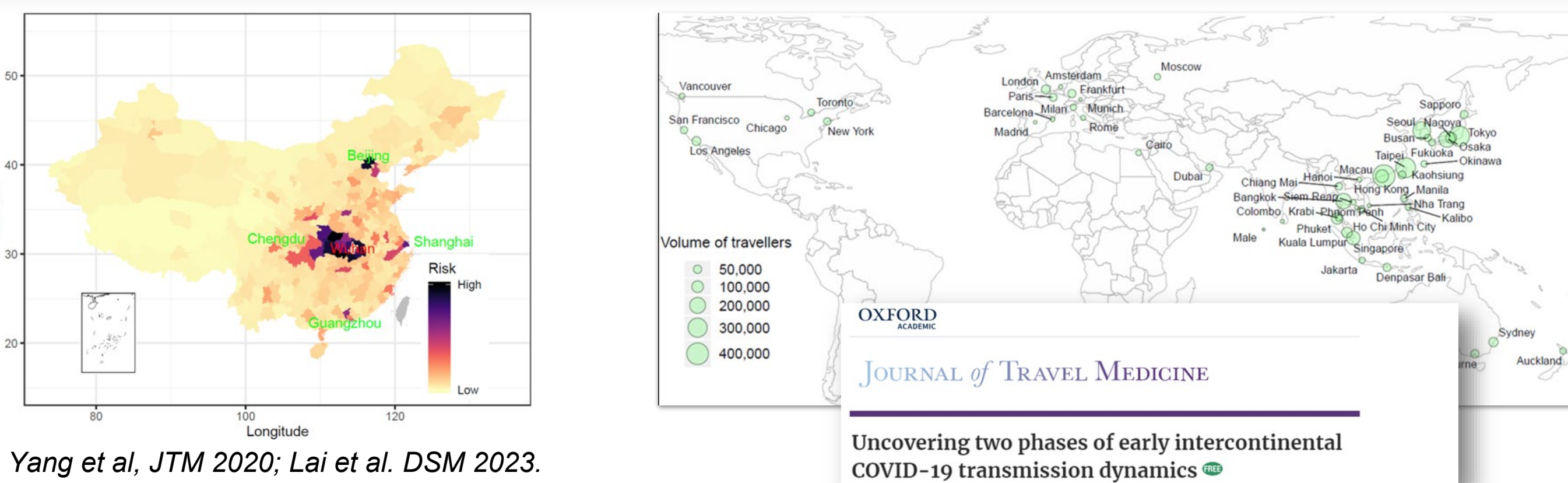
¹WorldPop, School of Geography and Environmental Science, University of Southampton, UK
²Department of Medicine, University of Toronto, Toronto, Canada
³Li Ka Shing Knowledge Institute, St. Michael's Hospital, Toronto, Canada
⁴Bluedot, Toronto, Canada

*Email: Shengjie.Lai@soton.ac.uk; A.J.Tatem@soton.ac.uk

Updated version on MedArxiv
Updated on February 5th, 2020

Download a PDF version in English

Download a PDF version in Chinese



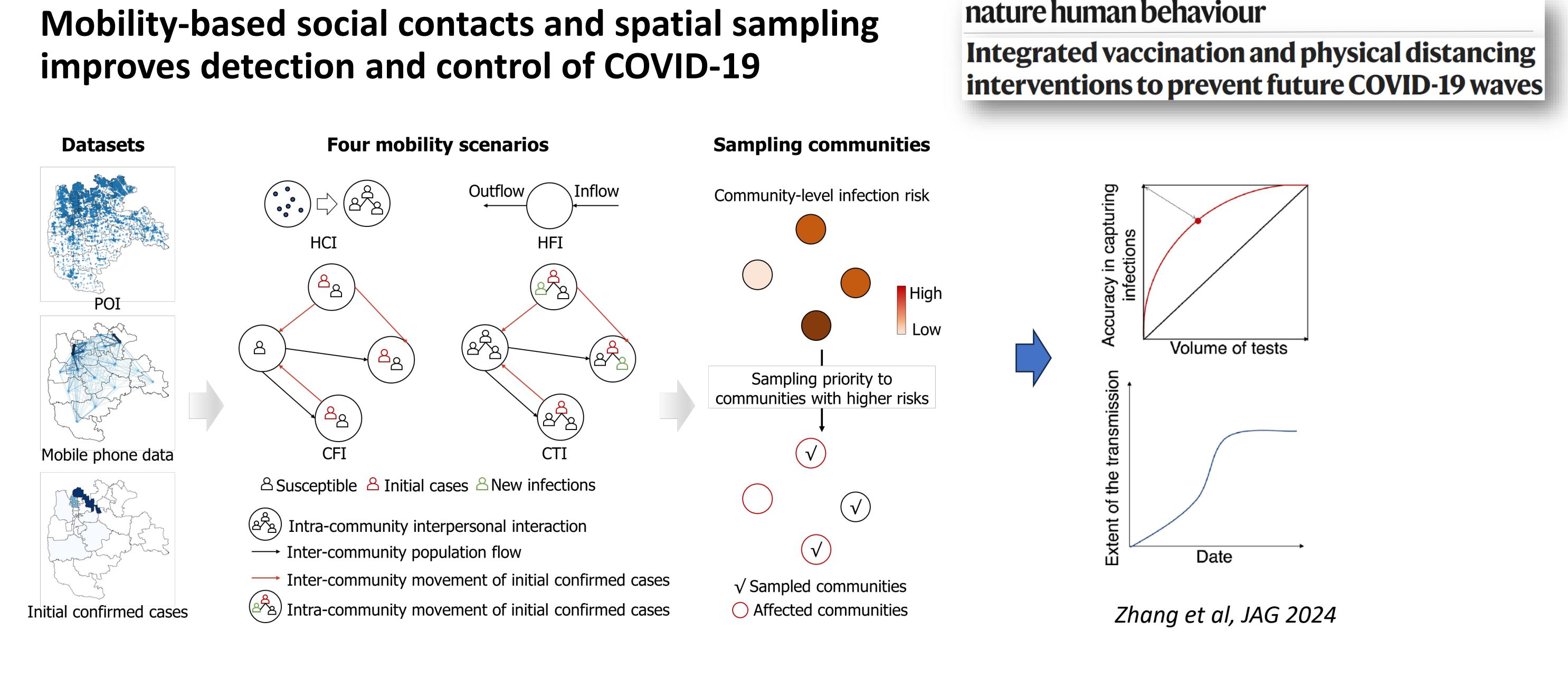
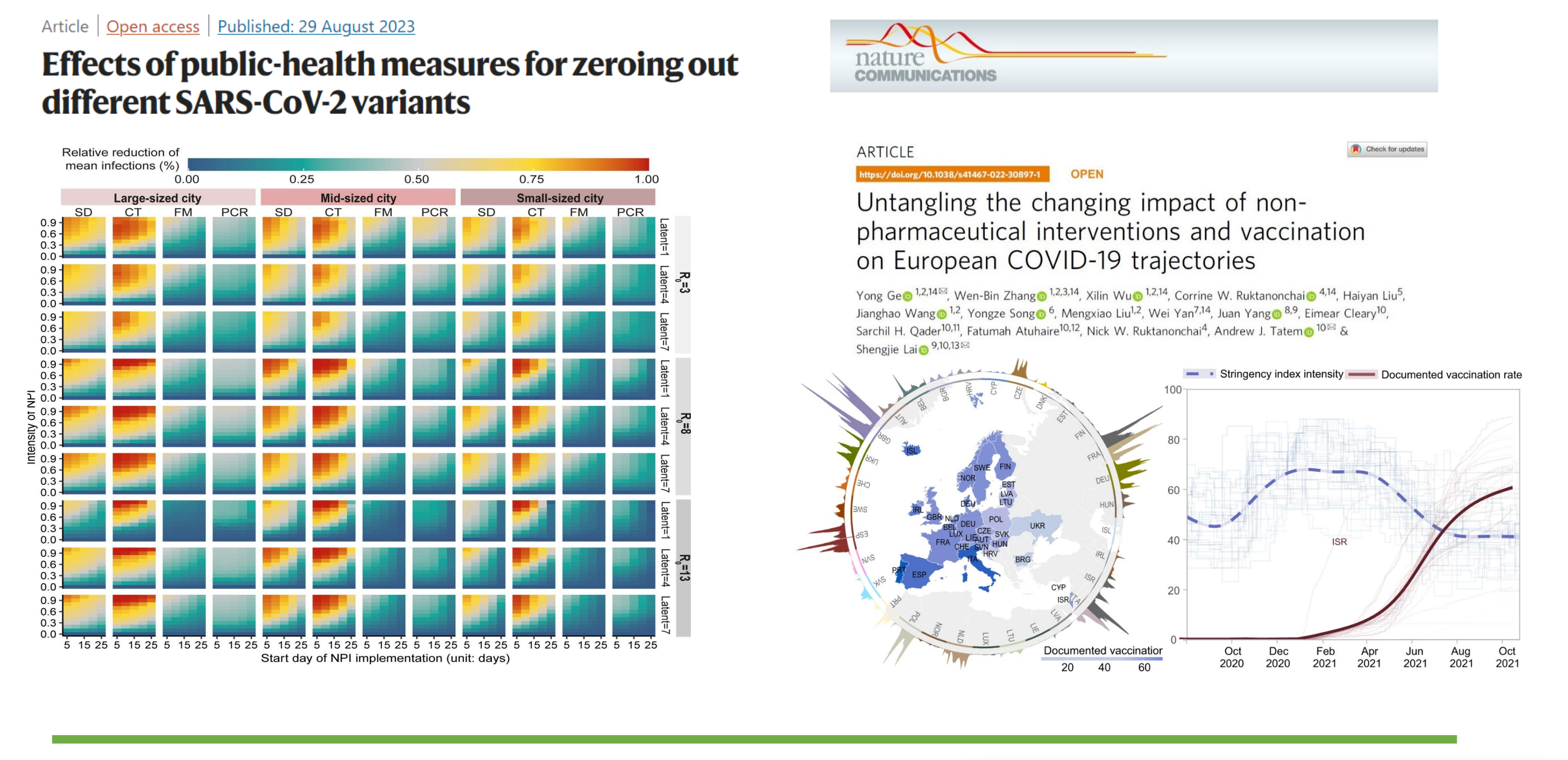
Assessing effects of interventions and response strategies

nature COVID research: a year of scientific milestones

Effect of non-pharmaceutical interventions to contain COVID-19 in China

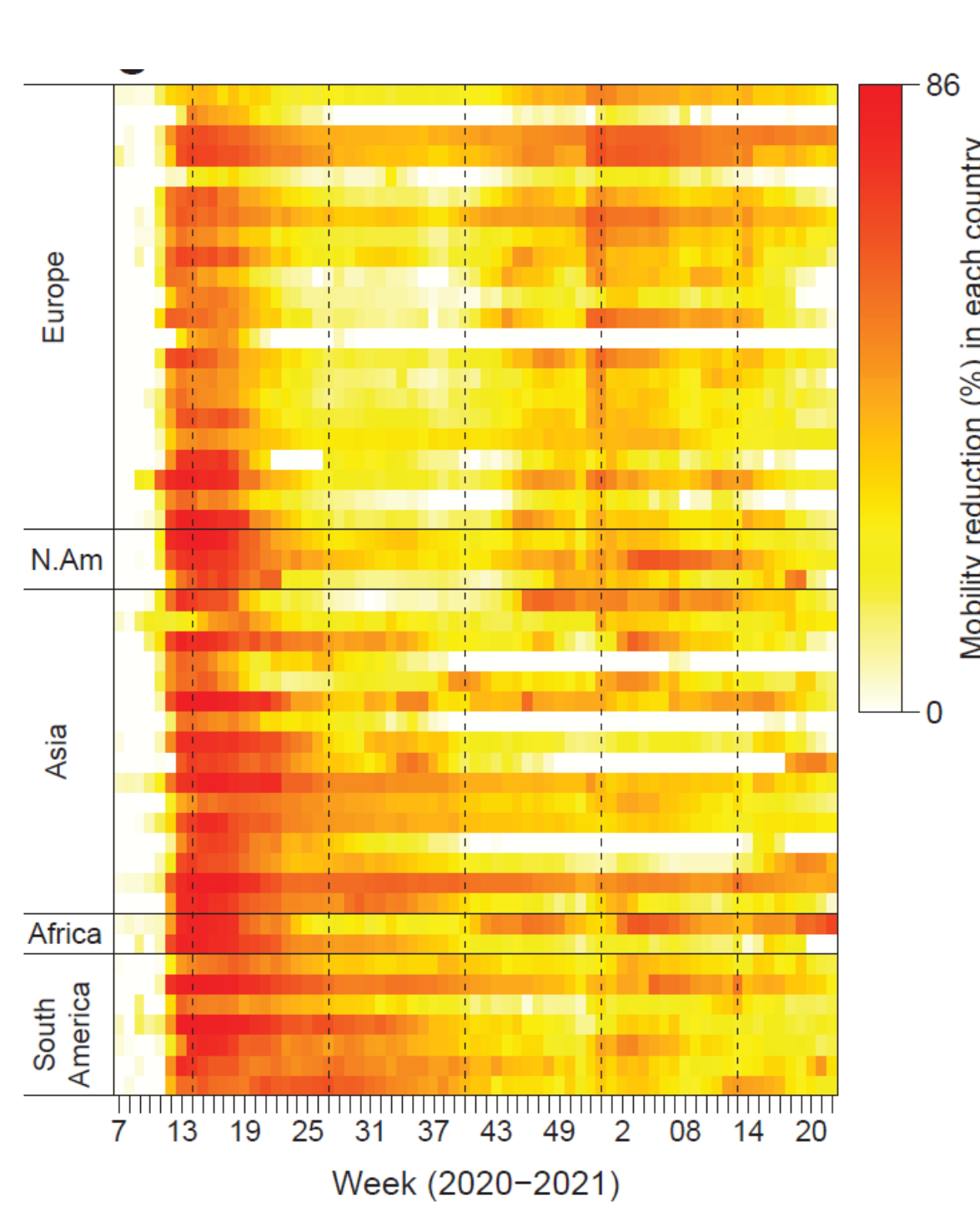
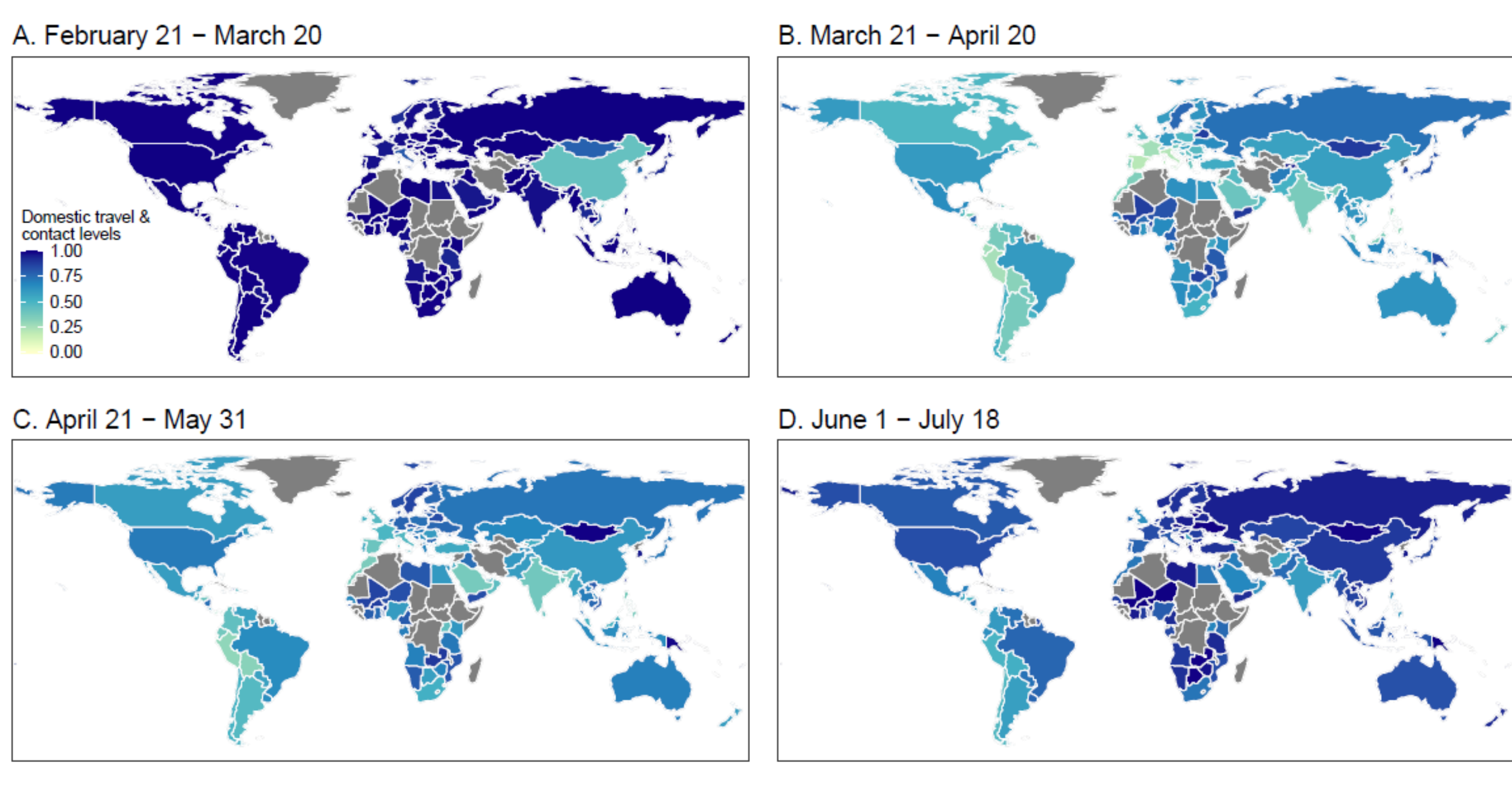
science Assessing the impact of coordinated COVID-19 exit strategies across Europe

scientific data High-resolution estimates of social distancing feasibility, mapped for urban areas in sub-Saharan Africa

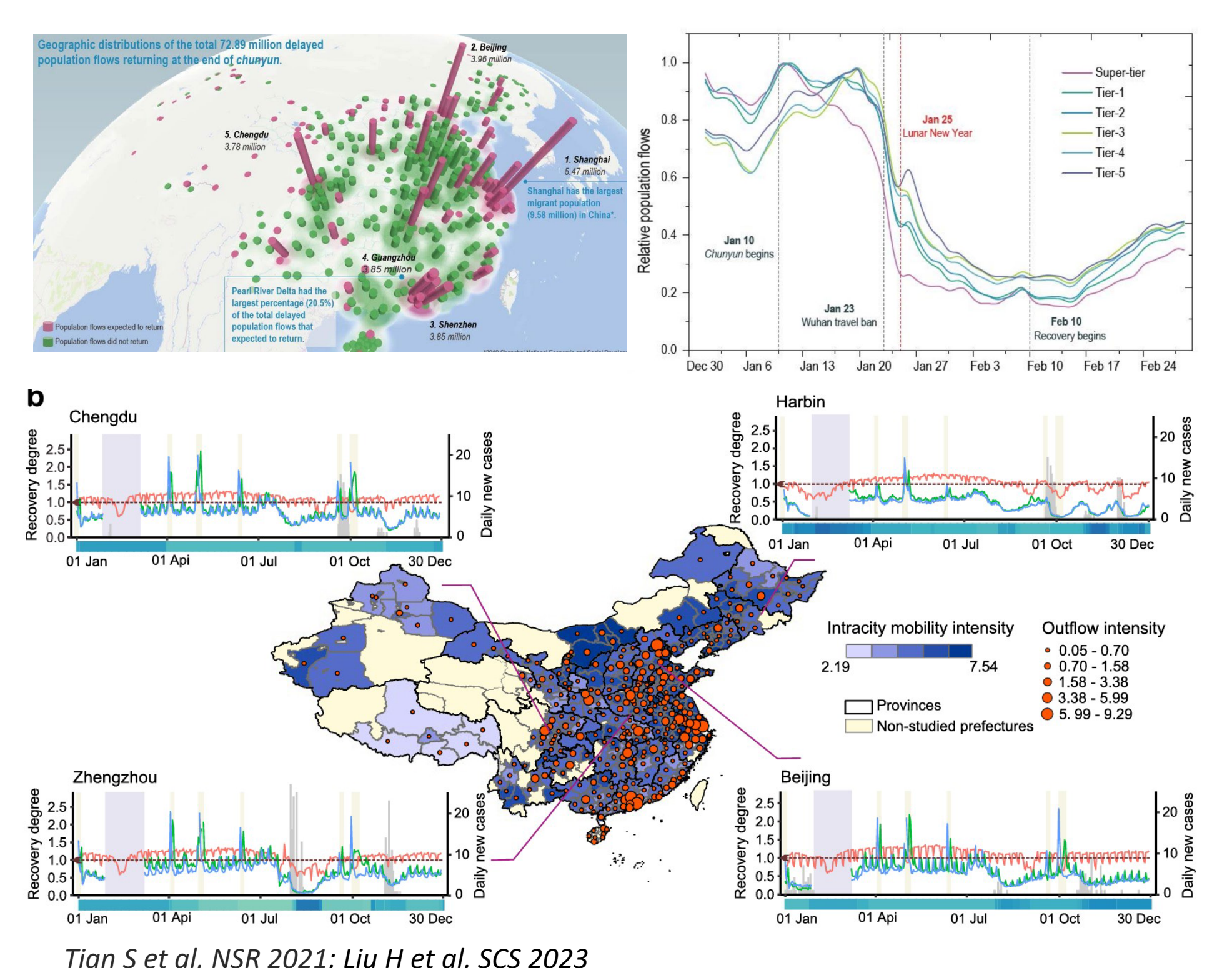


Measuring mobility changes and resilience in the context of coupled pandemic and extreme weather events

Changes in internal mobility by country in 2020-2021



Combined and delayed impacts of epidemics and extreme weather on mobility recovery



Mainland China used Baidu data, taking Jan 5 - 22, 2020 as a baseline. All other 134 countries/territories/areas used Google data, taking Jan 5 - Feb 15, 2020 as a baseline.

Lai S et al, Engineering 2021; Li & Lai et al, Nature 2021